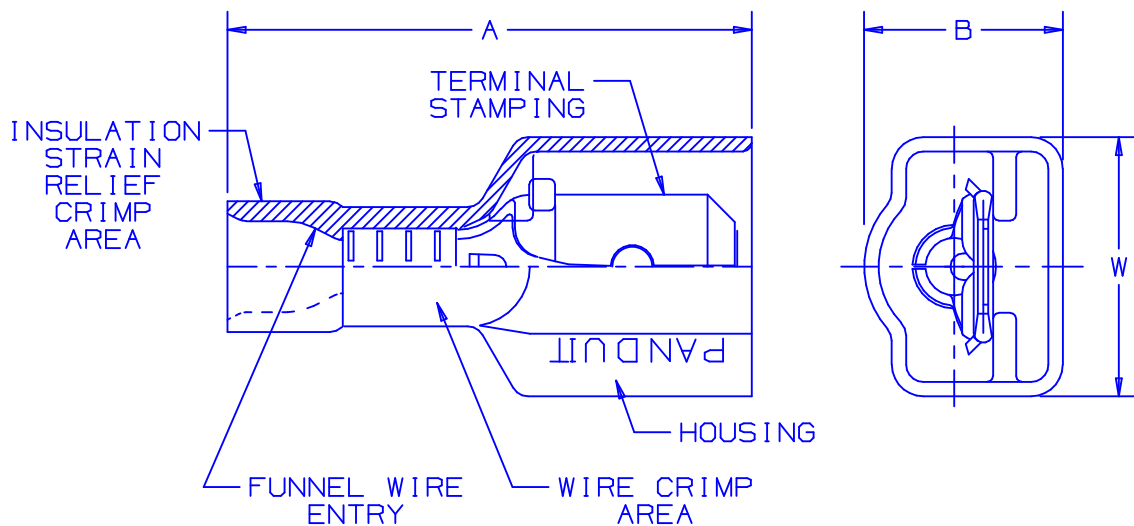
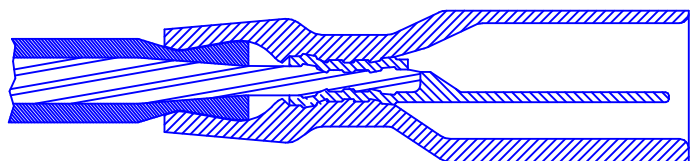


THIS COPY IS PROVIDED ON A RESTRICTED BASIS AND IS NOT TO BE USED IN ANY WAY DETRIMENTAL TO THE INTERESTS OF PANDUIT CORP.



NOTES:

1. USED FOR:
 - A. 600V MAX VOLTAGE RATING
 - B. 221°F (105°C) MAX TEMP RATING
 - C. STRANDED COPPER WIRE ONLY
2. WIRE STRIP LENGTH: $9/32^{+1/32}_{-0}$ (7.1^{+0.8}₋₀)
3. MATERIAL:
 - A. STAMPING: NICKEL PLATED BRASS
 - B. HOUSING: PREMIUM GRADE NYLON FOR SUPERIOR STRAIN RELIEF INSULATION CRIMPING
4. PACKAGING:
 - A. STD: -L = 50
 - B. BULK: -D = 500
5. DIMENSIONS IN BRACKETS ARE IN MILLIMETERS OR mm²



SECTION VIEW OF CRIMPED DISCONNECT

PART NUMBER		TAB SIZE	WIRE RANGE AWG (mm ²)	COLOR	MAX WIRE INSULATION DIAMETER	MIN WIRE INSULATION DIAMETER	DIMENSIONS in			CRIMP TOOLS
PREFIX	PK						A ^{±.03} (.8)	B ^{±.02} (.5)	W ^{±.02} (.5)	
DPF18-250F1MB	-L -D	.250 X .032 (6,3 X 0,8)	22-18 (0,5-1,0)	RED	.133 (3,38)	.080 (2,03)	.92 (23,4)	.34 (8,6)	.46 (11,7)	CT-520 CT-1525
DPF14-250F1MB	-L -D	.250 X .032 (6,3 X 0,8)	16-14 (1,5-2,5)	BLUE	.156 (3,96)	.090 (2,29)	.92 (23,4)	.34 (8,6)	.46 (11,7)	



A41512_05

05	7/03	KLFU		UPDATED DRAWING; WIRE RANGE WAS 0,5-1,5 ADDED CT-1525 TO TOOL CHART						PANDUIT CORP. TINLEY PARK, ILLINOIS DISCOGRIP™ LOOSE PIECE PREMIUM NYLON FULLY INSULATED UNIVERSAL MALE DISCONNECT .250 X .032	
04	1/01	RM	SKB	FILESPEC WAS N41512AA_PCD_03	8933	CCH	JAC				
03	10/98	JD		MATERIAL WAS TIN PLATED	07642						
02	10/96	TM	RS	UPDATED NOTES AND DIMENSIONS	05137	DH	LA				
REV	DATE	BY	CHK	DESCRIPTION	ECN	QA	PM	SUP	CUST		APP
											DRAWN BY KC CHK'D SCALE DRAWING NO A41512